

Model 600 Butterfly Valve

Model 600 butterfly valves are designed for general purpose applications in wide range of industries. Valve design conforms to API 609 standard and features a long neck with an ISO mounting pad that allows easy and direct mounting of variety of actuators. Single stem through-the-disc design provides for a robust stem-to-disc connection for reliable operation.

Typical applications

- General services in all types of industries
- Air conditioning & HVAC; vacuum service
- Process and chemical plants



Specification

Type	Wafer butterfly
Size range	50mm to 300mm (higher size on application)
Pressure rating	PN5, PN10 and PN16 available
End style	Wafer flangeless, with locating holes (*) (*) Lug and flanged versions and duo-offset disc models are also available on request
Face-to face	As per API-609
Drilling	Suitable for mounting between flanges drilled to ANSI 25/150, BS Table D/E & BS 4504 NP 10/16
Body	Cast iron standard ; ductile iron as option
Disc	Ductile iron standard; aluminum bronze, 316 Stainless steel monel options
Stem	410 stain less steel Standard; 316 st. Steel and monel options
Seat	Replaceable; EPDM standard; neoprene, Hypalon, Viton And PTFE options
Actuator Mounting	Mounting pad conforming to DIN/ISO 5211
Actuator option	Ten position lever, geared hand wheel, pneumatic or electric

Test Specifications

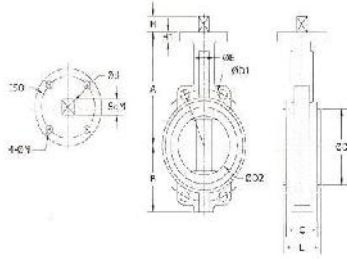
Body and Seat test As per API 598

Painting

Standard pant is two- pack epoxy in blue color (other pant options available on request)

Dimensions

All dimensions are in mm



Size, Mm	A	B	C	L	H1	FE	FD	FD2	FD1	Fd	Sq. M	H	ISO
50	162	80	43	45	13	33	76	53	121	14	11	11	F05/F07
65	175	89	45	47	13	33	89	65	140	14	11	11	F05/F07
80	181	95	46	49	13	33	104	79	153	14	11	11	F05/F07
100	200	114	52	54	13	37	135	104	178	14	11	11	F07
125	213	127	56	58	13	37	159	124	191	18	14	14	F07
150	226	140	56	58	13	44	188	156	216	22	17	17	F07
200	260	175	60	63	14	48	238	203	242	26	22	22	F10
250	292	220	68	70	14	51	293	251	299	32	27	27	F10
300	337	255	78	80	20	56	344	302	362	32	27	27	F10

Weight & Valve flow Capacity (Cv)

Size, mm	50	65	80	100	125	150	200	250	300
Weight, kg	2.6	3.4	3.7	5.1	7.2	8.2	12.6	19.8	30.8
Cv	135	220	302	600	1022	1579	3136	5340	8250

Actuator selection

Rating	Type /Valve size, mm	50	65	80	100	125	150	200	250	300
PN 5	Double-acting	C20 DA	C20 DA	C20 DA	C20 DA	C25 DA	C25 DA	C35 DA	C35 DA	C45 DA
PN 10		C20 DA	C20 DA	C20 DA	C25 DA	C30 DA	C35 DA	C45 DA	C45 DA	C60 DA
PN 16		C20 DA	C20 DA	C20 DA	C25 DA	C30 DA	C35 DA	C45 DA	C60 DA	C60 DA
PN 5	Spring-acting	C20 SR	C20 SR	C20 SR	C25 SR	C30 SR	C35 SR	C45 SR	C60 SR	C60 SR
PN10		C25 SR	C25 SR	C25 SR	C35 SR	C45 SR	C45 SR	C60 SR	C75 SR	C75 SR
PN 16		C25 SR	C25 SR	C25 SR	C35 SR	C45 SR	C45 SR	C60 SR	C75 SR	C75 SR

Ordering

Size, mm	Model	End style	Rating	Body	Disc	Seat	Shaft	Leakage	Actuator
50 mm /0200 80 mm/ 0300 Etc	FIG 600	Wafer / W Wafer Lug/ WL	PN 5/ G0 PN 10/ G1 PN 16/ G2	Cast iron / CI Ductile iron/ DI	Ductile iron/ DI SS316 / S2 SS304 / S2 Monel / ML	EPDM /RS66 Neoprene /Rs 16 Hypalon / RS 79 Viton /RS48 PTFE / RS 75	SS410 /S7 SS316 /S2	Zero leak / Z	Lever / L Gear HW/ G Bare stem / X

Canares Group of Companies.

#207, Shankar Nagar Main Road, Mahalaxmi layout, Bangalore-560 096.

Karnataka state. India. Ph. No. 2357 8184, 2357 8010,2357 8017, 2357 8012.

E-mail: sales@canares.com Website: www.canares.com